

SBI PROBATIONARY OFFICERS

MODEL PAPER

ENGLISH LANGUAGE

Direction (1-15): Read the following passage carefully and answer the questions given below it. Certain words are given in bold in the passage to help you locate them while answering some of the questions.

It is difficult to compare countries because various factors such as size, culture, history, geography, natural **endowments**, geopolitics and internal polity come into play. There are some goals which can be achieved by smaller countries; but sometimes smaller countries find it difficult to embark upon certain big technological plans even if they have the funds, because the size of the domestic market is too small. If we consider the bigger countries, the closest comparison to India is China, though there are many **crucial** differences.

The Chinese vision is to prepare the country for entry into the ranks of mid-level developed nations by the middle of the twenty-first century. Acceleration of the nation's economic growth and social development by reiving on advances in science and technology is **pivotal** in this.

Documents describing the Chinese vision state that science and technology constitute premier productive forces and represent a great revolutionary power that can propel economic and social development. It is interesting to note that the main lessons the Chinese have drawn from their past performance is their failure to promote science and technology as strategic tools for empowerment. They also point to the absence of mechanisms and motivations in their economic activity to promote dependence on science and technology. Similarly, they hold that their scientific and technological efforts were not **oriented** towards economic growth. As a consequence, they conclude, a large number of scientific and technological achievements were not converted into productive forces as they were too far removed from China's immediate economic and social needs. The Chinese vision is, therefore, aimed at exploiting state-of-art science and technology to enhance the nation's overall power and strength, to improve the people's living standards, to focus on resolving problems encountered in large-scale industrial and agricultural production and to effectively control and alleviate pressures brought on by population, resources and the environment. By the year 2000, China had aimed at bringing the main industrial sectors up to the technological levels achieved by the developed countries in the 1970s or '80s, and by 2020 to the level they would have attained by the early twenty-first century. The aim is to bridge the overall gap with the advanced world. There is a special emphasis on research and development of high technologies that would find defence applications. Some of these technologies are critical for improving the features of key **conventional** weapons. Some technologies are meant for enhancing future military capabilities. Other efforts are aimed at maintaining the momentum to develop capabilities for cutting-edge defence technologies. They call for unemitting efforts in this regard with the aim of maintaining effective self-defence and nuclear deterrent capabilities and to enable **parity** in defence, science and technology with the advanced world.

1. Comparison between two countries becomes difficult because
 - (i) the countries differ in their internal political systems.
 - (ii) each country has its own culture and natural resources which differ from those of others.
 - (iii) the countries with homogenous backgrounds are many in number.

(1) i only (2) ii only (3) i and ii only (4) All the three i, ii & iii (5) None
2. Why can't smaller countries take up big technological planning?
 - (1) They have other goals to achieve.
 - (2) They have smaller domestic market size.
 - (3) Smaller countries lack technological knowhow.
 - (4) Bigger countries do not permit them to do so. (5) None
3. What is the goal of China to be accomplished by the middle of 21st century?
 - (1) To become one of the most developed nations
 - (2) To surpass the level of all middle-level developed nations by a good margin
 - (3) To be the most influential superpower
 - (4) To be the most developed nation (5) None
4. What, according to the Chinese vision, can boost socioeconomic development?
 - (1) Science and Technology
 - (2) Minds united with revolutionary powers
 - (3) Premier productive forces
 - (4) A vision which propels development (5) None

5. Which of the following have the Chinese identified as their pitfall(s) from their past?
 (i) Lack of orientation of science and technology towards economic growth
 (ii) Lack of mechanisms in their economic activities to promote use of science and technology
 (iii) Neglect of science and technology as a strategic measure for empowerment
 (1) i & ii only (2) ii & iii only (3) i & iii only (4) All the three i, ii & iii (5) None
6. The scientific and technological accomplishments of China could
 (1) remain dysfunctional
 (2) be transformed into productive forces
 (3) be utilized for motivating economic activities
 (4) be promoted through political will (5) None
7. Which of the following is/are the expected result(s) of China's new visions?
 (i) To augment people's standard of living
 (ii) To tackle effectively pressures brought on by the population
 (iii) To utilise modern technology for bringing the latent power under control
 (1) i & ii only (2) ii & iii only (3) i & iii only (4) All the three i, ii & iii (5) None
8. What, according to the passage, is the gap in terms of number of years between the targeted developments in China and in other developed countries?
 (1) 5-10 years (2) 20-30 years (3) 40-50 years
 (4) More than 50 years (5) Less than 5 years
9. Which of the following is the essence of the contents of the passage?
 (1) Enormous population of the country can be positively utilized for developments.
 (2) Scientific and technological principles may not necessarily be instrumental in economic growth.
 (3) Harmonious development of a country can take place even in the absence of technology upgradation.
 (4) Economic growth needs to be driven by science and technology.
 (5) Countries should not be compared with each other.
- Directions (10-12):** Choose the word which is most nearly the SAME in meaning as the word given in bold as used in the passage.
10. **Endowments**
 (1) Powers (2) Measures (3) Habitats (4) Findings (5) Gifts
11. **Oriented**
 (1) Stated (2) Tempting (3) Deciding (4) Leaning (5) Sure
12. **Conventional**
 (1) Functional (2) Activist (3) Deliberate (4) Adventurous (5) Traditional
- Directions (13-15):** Choose the word which is OPPOSITE in meaning of the word given in bold as used in the passage.
13. **Crucial**
 (1) Central (2) Trivial (3) Decisive (4) Fundamental (5) Imperative
14. **Pivotal**
 (1) Irrelevant (2) Unmanageable (3) Irreparable
 (4) Inauspicious (5) Irritating
15. **Parity**
 (1) Impropriety (2) Indecency (3) Inequality (4) Similarity (5) Homogeneity
- Directions (16-25):** In each question below, a sentence is given with a part of it printed in bold type. That part may contain a grammatical error. Each sentence is followed by phrases (1), (2), (3) and (4). Find out which phrase should replace the phrase given in bold to correct the error, if there is any, and to make the sentence grammatically meaningful and correct. If the sentence is correct as it is and no correction is required, mark (5) as the answer.
16. What **does make him feel** awkward is only a trivial matter,
 (1) does make him to feel (2) makes him to feel
 (3) makes him feel (4) would make him feeling
 (5) No correction required
17. This is exactly **what he wanted me** to solve the problem,
 (1) how he wanted me (2) what he wants from
 (3) how does he want me (4) how did he want me
 (5) No correction required
18. They wanted to know **that we could extend** the required help.
 (1) that can we extend (2) that we had extended
 (3) if could we extend (4) if we could extend
 (5) No correction required
19. The Minister said that **he is proud of** the people of his constituency.
 (1) he should be proud of (2) he was proud of
 (3) he had pride for (4) it is he to be proud of
 (5) No correction required

20. The mob **started pelting stones** on the vehicles which were parked on the street.
 (1) started to pelting stones (2) started stones to be pelted
 (3) pelted stones starting (4) had started to pelting stones
 (5) No correction required
21. The priest describes **expectations as the root cause** of all miseries.
 (1) expectation is the root cause
 (2) expectations are the root cause
 (3) expectations are the root causes
 (4) the root cause as expectation (5) No correction required
22. If a person is able to see **what is wrong with oneself**, he can improve fast.
 (1) what is wrong with myself (2) what are the wrongs in oneself
 (3) what is wrong in oneself (4) what is wrong with himself
 (5) No correction required
23. Some people feel that **nurtured high aims** is a sign of immaturity.
 (1) nurturing high aims (2) nurture for high aim
 (3) nurturing for higher aims (4) nurturing with higher aims
 (5) No correction required
24. **He firmly belief** is that Yoga is the permanent solution to any disease.
 (1) His firmly belief (2) He firmly believes
 (3) His firm belief (4) He is firm in belief
 (5) No correction required
25. Dust **particles have accumulated** on the window panes are harmful to health.
 (1) particles are accumulated (2) particles accumulated
 (3) particles that is accumulating (4) has particles accumulated
 (5) No correction required
- Directions (26-30):** Rearrange the following six sentences (A), (B), (C), (D), (E) and (F) in the proper sequence to form a meaningful paragraph; then answer the questions given below them.
- A. Assuming that all these reasons are true, the fact remains that there is an urgent need to check the accelerated costs and initiate suitable measures.
 B. Some people attribute it to the increasing greediness among the medicos.
 C. The impact of these measures will be visible only after a considerable passage of time.
 D. Healthcare costs have been skyrocketing in our country.
 E. The measures include yoga classes with emphasis on physical and mental exercises and also change in food habits.
 F. Certain others feel that it is because of drastic changes in people's lifestyle and eating habits.
26. Which of the following would be the **FIRST** statement after rearrangement?
 (1) A (2) B (3) C (4) D (5) E
27. Which of the following would be the **SECOND** statement after rearrangement?
 (1) A (2) B (3) C (4) D (5) E
28. Which of the following would be the **FOURTH** statement after rearrangement?
 (1) A (2) B (3) C (4) D (5) E
29. Which of the following would be the **FIFTH** statement after rearrangement?
 (1) A (2) B (3) C (4) D (5) E
30. Which of the following would be the **SIXTH (LAST)** statement after rearrangement?
 (1) A (2) B (3) C (4) D (5) E
- Directions (31-40):** In each of the following sentences there are two blank spaces. Below each sentence there are five pairs of words denoted by numbers (1), (2), (3), (4) and (5). Find out which pair of words can be filled up in the blanks in the sentence in the same sequence to make the sentence grammatically correct and meaningfully complete.
31. To avoid....., there is a need for.....planning of the project.
 (1) cancellation, broad (2) problem, deliberate
 (3) pitfalls, systematic (4) inconvenience, convenient
 (5) losses, temporary
32. A good management will decide not only the.....for equipment but also its.....for deciding priorities.
 (1) need, urgency (2) usefulness, utility
 (3) cost, value (4) requirement, necessities
 (5) technology, methodology
33.appears to be a small error in the beginning may turn out to be a.....in the long run.
 (1) It, disaster (2) What, blunder
 (3) That, debacle (4) It, slip (5) What, incident
34. Being very.....in nature, he always uses his..... skills.
 (1) adamant, soft (2) polite, basic
 (3) humble, experimental (4) pushy, persuasive (5) mild, aggressive

35. Demand and supply do not.....the same relationship as the one that.....between height and weight.
 (1) possess, has (2) incur, is
 (3) defend, volunteers (4) bear, borne (5) have, exists
36. If the system.....to yield the desired result, try to.....the whole procedure in the given sequence.
 (1) entitles, dump (2) ignores, reproduce
 (3) fails, reoperate (4) imitates, generate (5) equips, encompass
37. He is so.....in his approach that not a single point ever.....his attention.
 (1) meticulous, escapes (2) casual, erodes
 (3) fanatic, brings (4) deliberate, attracts
 (5) nasty, coincides
38. Generally,.....students.....those who are mediocre.
 (1) humble, surmount (2) meritorious, surpass
 (3) bright, overestimate (4) intelligent, surrender
 (5) studious, respect
39.and.....should not be tolerated in our country which boasts of Ahimsa' as its way of life.
 (1) Politicking, elections (2) Dishonour, efficiency
 (3) Lethargy, procrastination (4) Nepotism, selfishness (5) Hatred, violence
40. He.....a wrong act because it was.....for him to do so due to circumstantial forces.
 (1) compelled, necessary (2) refused, dangerous
 (3) did, avoidable (4) committed, inevitable
 (5) simplified, harmful.

Directions (41-50): In the following passage, there are blanks, each of which has been numbered. These numbers are printed below the passage and against each, five words are suggested, one of which fits the blank appropriately. Find out the appropriate word in each case.

Mankind has seen rapid (41) in the last 150 years because of the mass manufacturing techniques (42) in western nations and later taken to new levels of efficiency by Japan. Mass production and production for the masses became the bases of new business strategies. Large-scale consumption by all with the social benefit of (43) poverty, became the dominant economic strategy. The advent of electricity and its large-scale application to lighting, heating and operating machines added a fresh dimension to manufacturing. By the 1950s came (44) in electronics and transistor devices to be followed by innovations in microelectronics, computers and various forms of sensors all of which (45) altered the manufacturing scene. It is now no longer necessary to make prototypes in a factory or a laboratory to study a new product. Many new products can be (46) on computers and their behaviour simulated on them. By choosing an optimum design through such simulations, computer programmes can directly (47) the manufacturing processes. These processes are generally called Computer Aided Design (CAD) and Computer

Assisted Manufacturing (CAM). These capabilities are leading to newer forms of (48) by customers. Each customer can be offered several special options. Customised product design or (49) manufacturing are other popular techniques currently in (50) in many developed countries.

41. (1) havoc (2) transformation (3) destruction (4) violence (5) deforestation
 42. (1) discarded (2) resorted (3) indulged (4) perfected (5) designated
 43. (1) removing (2) nurturing (3) appeasing (4) cajoling (5) mastering
 44. (1) additions (2) gadgets (3) modifications (4) variety (5) inventions
 45. (1) immediately (2) precisely (3) irreversibly (4) indefinitely (5) measurably
 46. (1) designed (2) produced (3) manufactured (4) sold (5) purchased
 47. (1) inspire (2) cultivate (3) visualise (4) drive (5) curtail
 48. (1) uses (2) demands (3) advertisements (4) consumption (5) goods
 49. (1) visible (2) secure (3) fundamental (4) overt (5) flexible
 50. (1) view (2) wings (3) vogue (4) isolation (5) order

GENERAL AWARENESS, MARKETING & COMPUTERS

51. Who has been appointed as the BBC's men Director -General ?
 1) Karan Thapar 2) Jimmy Savile 3) George Entwistle 4) Tony Hall 5) None
52. Renowned polish filmmaker Krzysztof Zanussi was honored with the prestigious lifetime Achievement award at the—International Film Festival of India (IFFI) IN Goa.
 1) 23rd 2) 33rd 3) 43rd 4) 53rd 5) 63rd
53. The government will pay _____ crore additional cash subsidy to state-owned fuel retailers to make up for part of the revenue they lost on selling auto and cooking fuel below cost this fiscal. Actual cash will flow only after Parliament approves supplementary demands for grants or additional spending.
 1) 10000 2) 20000 3) 22000 4) 25000 5) None

54. 'Vatsalya Mela' is annually organized in ?
 1) New Delhi 2) Bangalore 3) Bhopal 4) Chandigarh 5) Hyderabad
55. Which day is celebrated as the "Water Conservation Day" in India ?
 1) 15TH November 2) 17th November
 3) 18th November 4) 19th November 5) None
56. Pope Benedict XVI, the former Cardinal Joseph Ratzinger who took office in 2005 following the death of his predecessor, that he will resign, citing his age and infirmity to explain the decision to become the first man to relinquish the role voluntarily since 1294. The Vatican said that the papacy would remain vacant until a successor is chosen. Which date has been announced by Pope for his resignation?
 1) 15 February 2013 2) 20 February 2013
 3) 28 February 2013 4) 15 March 2013 5) None
57. Recently, in which state, a Dalit colony is renamed after Myanmar's pro-democracy leader Aung San Suu Kyi ?
 1) Madhya Pradesh 2) Andhra Pradesh
 3) Karnataka 4) Uttar Pradesh 5) None
58. In which country, the 21st ASEAN Summit was held ?
 1) Cambodia 2) Vietnam 3) Malaysia 4) Thailand 5) None
59. In which city, the World Travel Market-2012 was held ?
 1) Paris 2) London 3) New York 4) Berlin 5) None
60. What is HD 40307g ?
 1) Planet 2) Dwarfstar 3) Asteroid 4) Black Hole 5) None
61. Which state government has recently announced to set up Rural Administrative Service ?
 1) Bihar 2) West Bengal 3) Assam 4) Uttar Pradesh 5) None
62. The National Minorities development and Finance Corporation has disbursed a total amount of Rs ---crore during the first half of the current Financial year 2012-13 under its term loan and the Micro Financing schemes ?
 1) 131.25 2) 231.25 3) 331.25 4) 431.25 5) 531.25
63. Reliance Communications announced, that it has outsourced operations and management of its network in northern and western India to another company in an \$ 1 billion agreement spread over eight years. The contract would cover one lakh kilometres of fiber and mobile infrastructure in 11 telecom circles of RCom, across North and West of India including Delhi and Mumbai, a joint statement by the two companies. To which company Reliance has outsourced?
 1) Ericsson 2) Cisco 3) Juniper Networks 4) EMC2 5) None
64. Author of the book "Netaji Subash Chandra Bose and Germany" is _____.
 1) Anita B. Pfaff 2) Arundhati Roy
 3) R.K.Narayan 4) Chetan Bhagat 5) None
65. The monthly Magazine Bi-lingual Shubh Yatra is launched by _____.
 1) Ministry of Defence 2) Ministry of Civil Aviation
 3) Ministry of Navy 4) Ministry of Economics 5) None
66. Pandit Ravi Shankar, who was honoured with the posthumous Lifetime Achievement Grammy award was a _____ legend.
 1) Sitar 2) Veena 3) Tanpura 4) Violin 5) None
67. The Information and Broadcasting Ministry plans to allocate Rs 100 crore to provide impetus to community radio stations in the 12th Plan. At a conference on community radio (3rd National Community Radio Sammelan) in New Delhi on Monday, 11 Feb 2013, I&B Minister Manish Tewari said that new community radio stations were also proposed to be set up during the Plan (2012-17) period. What is the number of new community radio stations proposed?
 1) 100 2) 500 3) 700 4) 1000 5) None
68. The chairman of Lalit Kala Akademi is _____.
 1) Ashok Vajpeyi 2) Balan Nambiar
 3) Kalyan Kumar Chakravarty 4) All of these 5) None
69. The new President of ICAI is _____.
 1) Subodh Kumar Agrawal 2) G Ramaswamy
 3) Uttam Prakash Agarwal 4) Sunil H. Talati 5) None
70. For Karnataka Watershed Development Project II India has signed with _____.
 1) Swiss Bank 2) World Bank 3) NewYork Bank 4) Bank of Japan 5) None
71. The 66th British Academy Film Awards, more commonly known as the BAFTAs, were held on 10 February 2013 at the Royal Opera House in London, honouring the best national and foreign films of 2012. Which film was named the Best Film for 2012?
 1) Lincoln 2) Life of Pi 3) Argo 4) Zero Dark Thirty 5) None
72. Haryana government exempted VAT on _____.
 1) Rice 2) Tobacco 3) Sugarcane 4) Wheat 5) None
73. From 13 Feb 2013, the Solicitor General of India is _____.
 1) Rohinton Nariman 2) Gopal Subramaniam
 3) Mohan Parasaran 4) Ashok Desai 5) None

74. The first death anniversary day of Sri Rajiv Gandhi was observed as the
 1) National Integration Day 2) Peace and Love Day
 3) Secularism Day 4) Anti-Terrorism Day 5) None
75. 20th August is celebrated as
 1) Earth Day 2) Sadbhavana Divas
 3) No Tobacco Day 4) All of these 5) None
76. Short-term planning focuses on
 (1) functional plans (2) long term objectives (3) specific goals
 (4) both (1) and (3) (5) None
77. In marketing terms, Attitude can best be defined as a
 (1) rude behaviour of salesperson (2) rude behaviour of consumer
 (3) mental state of consumer (4) ego of the marketing executive (5) None
78. The nominal scale used for marketing research, refers toll
 1) population characteristics based on age or sex or ownership of a specific consumer durable
 (2) ordering of scale (3) Both (1) and (2)
 (4) Neither (1) nor (2) (5) None
79. Reference group influences visa-vis consumption decision, is a function of the —
 (1) product category (2) group characteristics
 (3) group communication process (4) All of the above (5) None
80. Just in time (JIT) technique is getting wider acceptance world over. The technique was first introduced in
 (1) India (2) Indonesia (3) Japan (4) America (5) None
81. 'Gate keepers —
 (1) use the products (2) reports on product performance
 (3) control the flow of information into buying centre
 (4) issue chalian for discharge of products (5) None
82. Consumer Day is celebrated on—
 (1) 15 th March (2) 16th March (3) 20th April (4) 20th March (5) None
83. A situation whereby market is expanded by developing new products to satisfy new consumer needs is called —
 (1) Market development (2) Diversification
 (3) Both (1) and (2) (4) Neither (1) nor (2) (5) None
84. The level of commitment that consumers feel toward a given brand is called —
 (1) Brand equity (2) Brand name (3) Brand loyalty (4) Brand utility (5) None
85. Assigning specific jobs and work places to the selected candidates is known as —
 (1) Placement (2) Recruitment (3) Transfer (4) Promotion (5) None
86. As a counsellor, a personnel manager—
 (1) reminds the management of moral obligations towards employees
 (2) encourages the employees
 (3) tries to settle the disputes between labour and management
 (4) All of the above (5) None
87. Which among the following is not included in fringe benefits available to an employee ?
 (1) old age survivors benefits (2) pensions
 (3) gratuities (4) Both (1) and (2) (5) None
88. Which among the following is an example of tele conferencing ?
 (1) Computer conferencing (2) Audio conferencing
 (3) Video conferencing (4) All of the above (5) None
89. Information systems can assist managers by —
 (1) providing information (2) providing data on internal sources
 (3) directing (4) All of the above (5) None
90. Which among the following is a disadvantage of an EDI system ?
 (1) Speed (2) Errors (3) Expensive (4) Mismatch (5) None
91. In online marketing, there is
 (1) no exchange (2) exchange is the core of marketing
 (3) Guarantee (4) Only warranty (5) None
92. What menu is selected to cut, copy, and paste ?
 1)File 2) Tools 3) Special 4) Edit 5) None
93. The most important or powerful computer in a typical network is
 1) desktop 2) network client 3) network server 4) network station 5) None
94. The primary purpose of software is to turn data into
 1) Web sites 2) information 3) programs 4) objects 5) None
95. The ability to find an individual item in a file immediately — is used.
 1) file allocation table 2) directory
 3) sequential access 4) direct access 5) None
96. To make a notebook act as a desktop model, the notebook can be connected to a_. which is connected to a monitor and other devices.
 1) bay 2) docking station 3) port 4) network 5) None

97. You can use the tab key to
 1) move a cursor across the screen 2) indent a paragraph
 3) move the cursor down the screen 4) Only 1) and 2) 5) None
98. A collection of related files is called a
 1) character 2) field 3) database 4) record 5) None
99. Storage that retains its data after the power is turned off is referred to as
 1) volatile storage 2) non-volatile storage
 3) sequential storage 4) direct storage 5) None
100. Which of the following is an example of connectivity?
 1) Internet 2) floppy disk 3) power cord 4) data 5) None

DATA ANALYSIS AND INTERPRETATION

Directions (101 - 105) In each of these questions a number series is given. Below the series one number is given followed by a), b), c), d) and e). You have to complete this series following the same logic, as in the original series and answer the question that follows.

101. 5 9 25 91 414 2282.5
 3 a) b) c) d) e).
 What will come in place of (c)?
 1) 63.25 2) 63.75 3) 64.25 4) 64.75 5) None
102. 15 9 8 12 36 170
 19 a) b) c) d) e).
 What will come in place of (b)?
 1) 18 2) 16 3) 22 4) 24 5) None
103. 7 6 10 27 104 515
 9 a) b) c) d) e).
 What will come in place of (d)?
 1) 152 2) 156 3) 108 4) 112 5) None
104. 6 16 57 244 1245 7506
 4 a) b) c) d) e).
 What will come in place of (d)?
 1) 985 2) 980 3) 1004 4) 1015 5) None
105. 8 9 20 63 256 1285
 5 a) b) c) d) e).
 What will come in place of (e)?
 1) 945 2) 895 3) 925 4) 845 5) None

Directions (106 - 110) What approximate value will come in place of the question mark (?) in the following questions? You are not expected to calculate the exact value.)

106. $(32.51)^2 - 17.45^2 = ?$
 1) 780 2) 850 3) 680 4) 820 5) 750
107. 88.25% of 450 = ? % of 530
 1) 70 2) 68 3) 75 4) 80 5) 65
108. $\sqrt{898} \times (12.005)^2 + ? = 5000$
 1) 680 2) 720 3) 750 4) 620 5) 630
109. $3745 \div 24.05 \times 17.98 = ?$
 1) 2860 2) 2800 3) 2760 4) 2720 5) 2840
110. $117.95 \times 8.017 \times 4.98 = ?$
 1) 4670 2) 4780 3) 4840 4) 4720 5) 4800

Directions (111 - 115) In these questions, a question is given followed by information in three statements. You have to consider the information in all the three statements and decide the information in which of the statements is not necessarily required to answer the question and therefore can be dispensed with. Indicate your answer accordingly.

111. How many students from Institute 'A' got placement?
 I. The numbers of students studying in institutes A and B are in the ratio of 3 : 4.
 II. The number of students who got placement from Institute B is 120% of the number of students who got placement from Institute A.
 III. 80% of the students studying in Institute B got . placement.
 1) None of the statements can be dispensed with
 2) Only I 3) Only II 4) Any one of the three
 5) The question cannot be answered even with the information in all the three statements
112. What is the monthly income of Mr X?
 I. Mr. X spends 85% of his income on various items and the remaining amount is saved.
 II. The Monthly savings of Mr. X are ? 4500.
 III. Out of the total money spent by Mr. X in a month, one-fifth is spent on food and an amount of f ,20400 on other items.
 1) Only II 2) Only III 3) Only either II or III
 4) The question can't be answered even with the information in all the three statements
 5) None of the above

113. What is Suchitra's present age?
 I. Suchitra's present age is double the age of her son.
 II. The ratio of the present ages of Suchitra and her mother is 2 : 3.
 III. Four years hence the ratio of Suchitra's age to her son's will be 24 : 13.
 1) Only II 2) Only III 3) Either I or II 4) Either II or III only 5) None
114. What is Neeta's share in the profit earned at the end of two years in a joint business run by Neeta, Seeta and Geeta?
 I. Neeta invested ₹ 85000 to start the business.
 II. Seeta and Geeta joined Neeta's business after six months, investing amounts in the ratio of 3 : 5.
 III. Total amount invested by Seeta and Geeta is Rs.2.5 lakh.
 1) Only II 2) Only III 3) Only either II or III
 4) Information in all the three statements is required for answering the question
 5) The question cannot be answered even with the information in all the three statements
115. What is the labelled price of an article?
 I. The cost price of the article is Rs.500.
 II. The selling price after offering 5% discount on the labelled price is ₹ 608.
 III. The profit earned would have been 28% if no discount had been offered.
 1) Only I 2) Only III 3) Only II and III 4) Only I and III 5) Only I and II

Directions (116 - 120) Study the following information carefully to answer these questions.
 An Institute having 450 employees, has sent all its employees for training in one or more areas out of HEM, Computer Skills and Financial Skills. The employees are classified into two categories—Officers and Clerks, who are in the ratio of 4 : 5. 10% of the Officers take training only in Computer Skills, 16% of the Clerks take training only in HEM which is equal to the number of Officers taking training only in Financial Skills and 50% of the number of Officers taking training in HRM and Financial Skills both. 6% of the total employees take training in all the three, of which two-thirds are Officers. 10% of the total employees take training in HEM and Computer Skills both, which is five times the number of Clerks taking training in Computer Skills and Financial Skills. 10% of the Clerks take training in HEM and Computer Skills both. The number of Officers taking training only in HRM is 25% of the number of Clerks taking training only in HRM. 20% of the total number of employees take training only in Computer Skills. Number of Clerks taking training in HRM and Financial Skills both is 20% of the total number of Clerks.

116. Total how many Officers take training in HRM?
 1) 110 2) 128 3) 118 4) 98 5) None
117. Total how many Clerks take training in Computer Skills but not in HRM?
 1) 113 2) 104 3) 88 4) 79 5) None
118. Total how many employees take training in Financial Skills but not in HRM?
 1) 106 2) 135 3) 127 4) 134 5) None
119. Total how many Clerks take training in Financial Skills?
 1) 115 2) 106 3) 47 4) 97 5) None
120. What per cent of the total number of Officers take training in Computer Skills but not in Financial Skills?
 1) 25 2) 40 3) 20 4) 15 5) None

Directions (121 - 125) Study the following table carefully to answer the questions.
Rate of interest (p.c.p.a) offered by five companies on deposits under different schemes

Company Scheme	A	B	C	D	E
I	8.5	9.0	8.0	8.5	9.0
II	9.5	8.5	9.0	9.0	8.5
III	8.0	8.0	7.5	8.5	8.5
IV	10.0	9.5	10.5	9.5	10.0

121. Mr X deposited an amount in Scheme II with Company C for two years. After that he withdrew the amount and reinvested only the principal amount in Scheme IV of Company B for two years. Total amount of simple interest accrued from the two schemes is Rs.14800. What was the principal amount?
 1) Rs.48000 2) Rs.42000 3) Rs.40000 4) Can't be determined 5) None
122. Company E offers compound interest under Scheme I and Company A offers simple interest under Scheme IV. What will be the difference between the interest earned under Scheme I of Company E and Scheme IV of Company A respectively in two years on "an amount of Rs.1.2 lakh?
 1) Rs.1428 2) Rs.1328 3) Rs.1528 4) Rs.1548 5) None

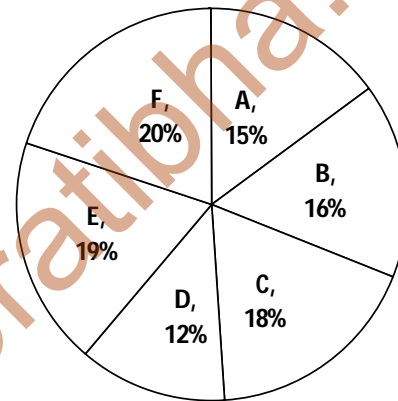
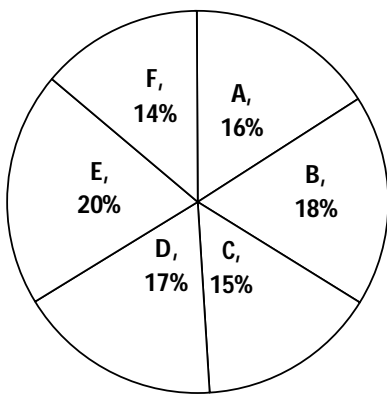
123. Company D offers compound interest under Scheme II and simple interest under Scheme IV. Abhijit invested Rs.25000 with this company under Scheme IV and after one year switched to Scheme II along with the interest for one more year. What is the total amount he will get at the end of two years?
 1) Rs.28939.25 2) Rs.29838.75 3)Rs.31748.25 4) Rs. 31738.75 5) None
124. Abhishek invested an amount of Rs.45000 for two years with Company B under Scheme III, which offers compound interest, and Jeevan invested an equal amount for two years with Company C under Scheme IV, which offers simple interest. Who earned more interest and how much?
 1) Abhishek, Rs.1875 2) Jeevan, Rs.1875
 3) Abhishek, Rs.1962 4) Jeevan, Rs.1962 5) None
125. Mr Lai invested Rs.30000 in Company A under Scheme II, which offers simple interest and Rs.48000 in Company D under Scheme II, which offers compound interest. What will be the total amount of interest earned by Mr Lai in two years?
 1) Rs.14728.80 2) Rs.17428.50 3) Rs.14827.70 4) Rs.16728.20 5) None

Directions (126 - 135) Study the following pie-charts and table to answer these questions.

Statewise details of the adult population of a country

Graduate and above
 Total number = 24 lakh

Upto XII Std pass
 Total number = 32 lakh



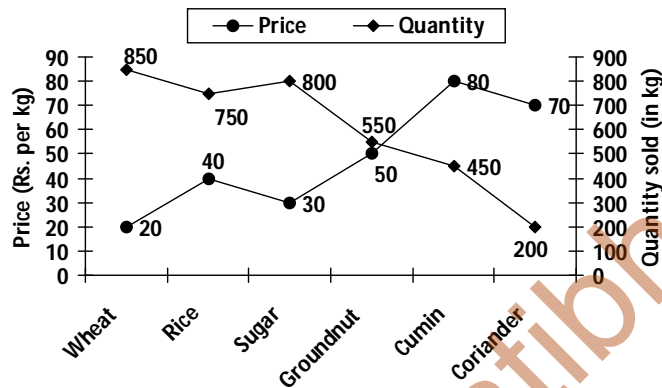
Male and Female (M : F) ratio

State	Graduate and Above		Upto XII Std Pass	
	M	F	M	F
A	7	5	7	9
B	5	3	3	5
C	5	4	4	5
D	9	8	5	7
E	9	7	9	10
F	4	3	3	2

126. What is the difference between the Graduate male population and XII Std male population from State A?
 1) 24000 2) 14000 3) 28000 4) 36000 5) None
127. What is the ratio of the Graduate female population of State E to XII Std female population of State D?
 1) 7 : 5 2) 5 : 7 3) 16 : 15 4) 15 : 16 5) None
128. The Graduate female population of State C is what per cent of the XII Std female population of that State?
 1) 40 2) 62.5 3) 50 4) 52.5 5) None
129. The XII Std male population of State C is what per cent of the total XII Std population of all the states together?
 1) 8% 2) 12% 3) 11% 4) 9% 5) None
130. What is the ratio of the Graduate male population of State E to the XII Std female population of that State?
 1) 28 : 35 2) 35 : 28 3) 32 : 45 4) 45 : 32 5) None
131. Total Graduate population of State F is what per cent of the total XII Std population of State A?
 1) 56 2) 72 3) 68 4) 76 5) None

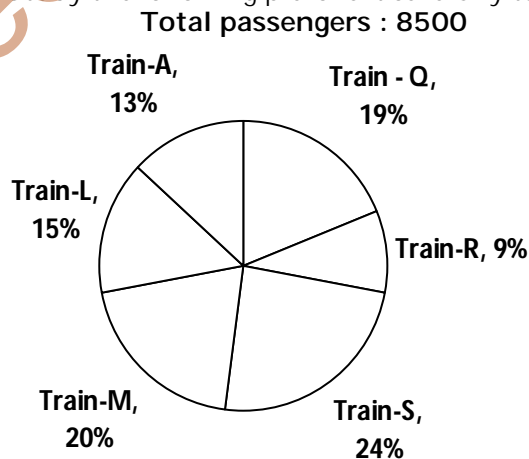
132. Std XII male population of State E is what per cent of the Std XII male population of State F?
 1) 70 2) 75 3) 68 4) 72 5) None
133. What is the ratio of the total Graduate and Std XII male population of State A to the total Graduate and Std XII female population of that State?
 1) 215 : 216 2) 214 : 215 3) 217 : 215 4) 215 : 217 5) None
134. What is the ratio of the total Graduate population of State D to the total Std XII population of that State?
 1) 17 : 16 2) 16 : 17 3) 64 : 51 4) 51 : 64 5) None
135. The Graduate female population of State B is what per cent of the Graduate female population of State (Rounded off to the nearest integer.)
 1) 129 2) 82 3) 77 4) 107 5) None

Directions (136 - 140) Study the following E graph carefully to answer these questions.



136. What is the average price per kg of wheat and rice sold? Rounded off to the nearest integer)
 1) 32 2) 34 3) 36 4) 35 5) 31
137. If cumin is sold at a 10% discount, the quantity sold doubles. What will be the cost of the total quantity of cumin sold on discount?
 1) Rs. 52.60 2) Rs.28800 3) Rs.32000 4) Rs.57600 5) None
138. Out of the total quantity of sugar sold, half the quantity is sold at the given rate while half the quantity is sold on a price increased by 20%. What is the total cost of the entire quantity sugar sold?
 1) Rs.23100 2) Rs. 23800 3) Rs.22400 4) Rs.23400 5) None
139. If the quantities sold of groundnut and cumin are interchanged, what will be the total cost of the quantities sold for these two items together?
 1) Rs.62000 2)Rs.60000 3) Rs.65000 4) Rs.63000 5) None
140. If the quantity of coriander sold is increased by 200% and the price per kg is reduced by 8%, what will be the total cost of coriander sold?
 1)Rs.38460 2) Rs.36480 3) Rs.38640 4) Rs.36840 5) None

Directions (141 - 145) Study the following pie-chart carefully to answer these questions.



141. What was the approximate average number of passengers in Train-S, Train-M and Train-L together?
 1) 1521 2) 1641 3)1651 4)1671 5)1691

142. If in Train-R 34 per cent of the passengers are females and 26 per cent are children, what is the number of males in that train ?
 1) 306 2) 316 3) 308 4) 318 5) None
143. Number of passengers in the Train-Q is approximately what percentage of the total number of passengers in Train-A and Train-R?
 1) 90 2) 70 3) 75 4) 80 5) 86
144. Which train has second highest number of passengers ?
 1) A 2)Q 3)S 4)M 5)L
145. How much more per cent (approximately) number of passengers are there in Train-M as compared to the number of passengers in Train-L ?
 1) 29 2) 49 3) 43 4) 33 5) 39

Directions (146 - 150) Study, the following table carefully to answer the questions that follow. Monthly rent (in Rs. thousands) at five different places in six different years

Year	Place				
	Church gate	Dadar	Kandivali	Borivali	Virar
2005	5.3	3.8	1.5	2.7	1.1
2006	12.5	8.3	3.4	4.8	2.1
2007	16.7	11.7	5.5	6.6	1.8
2008	20.9	13.6	9.8	12.7	3.6
2009	25.8	14.5	11.5	14.1	5.5
2010	30.3	20.9	15.6	15.9	7.8

146. In which place, the monthly rent did not increase consistently from year 2005 to 2010 ?
 1) Churchgate 2) Dadar 3) Kandivali 4) Borivali 5) Virar
147. In which year at Churchgate, the monthly rent increased more than 100% from the previous year?
 1) 2006 2) 2007 3)2008 4)2009 5)2010
148. What was the difference between the monthly rent at Dadar in the year 2009 and Borivali in the year 2007?
 1) 7600 2)? 7900 3)? 8100 4)? 8600 5) None
149. Monthly rent at Kandivali in the year 2008 was approximately what per cent of the total monthly rent at Virar over all the years together ?
 1) 30 2) 33 3) 38 4) 42 5) 45
150. Which city was most expensive in terms of rent ?
 1) Churchgate 2) Dadar 3) Kandivali 4) Borivali 5) Virar

REASONING

151. Among R, Q, R, S, T and U, R is taller than only P and U. S is shorter than only T and Q. If each of them has a different height^ who among them will be the third from top when they are arranged in descending order of their heights? .
 1)R 2)P 3) S 4)Q 5) None
152. Among P, Q, R, S and T, Q is younger than only S and R and older than T. Who among them is the oldest?
 1)S 2)R 3)P 4) Data inadequate 5) None
153. Pointing to a boy. Meena said, "He is the only grandson of grandfather". How is the boy related to Meena?
 1) Brother 2) Cousin 3) Uncle 4) Data inadequate 5) None
154. B is sister of D. M is father of D. N is sister of M. How is B related to N?
 1) Brother 2) Aunt 3) Niece 4) Data inadequate 5) None
155. If it is possible to make only one meaningful English word with the second, the fifth, the sixth and the tenth letters of the Word STREAMLINE, which of the following will be the third letter of that word ? If no such word can be made, give 'X' as the answer and if more than one such word can be made, give 'Y' as the answer.
 1)E 2)A 3)M 4)X 5)Y

Directions (156-162): In each of the questions below are given three statements followed by three conclusions numbered I, II & III. You have to take the given statements to be true even if they seem to be at variance with commonly known facts. Read all the conclusions and then decide which of the given conclusions logically follows from the given statements disregarding commonly known facts.

156. Statements:
Some blades are papers.
Some papers are books.
Some books are pens.
Conclusions:
I. Some pens are papers.
II. Some books are blades.
III. Some pens are blades.
1) Only I follows 2) Only II follows 3) Only III follows 4) None follows
5) Only II and III follow
157. Statements:
Some pencils are marbles.
All marbles are buses.
Some buses are trucks.
Conclusions:
I. Some trucks are pencils.
II. Some buses are pencils.
III. No truck is pencil.
1) Only I follows 2) Only II follows 3) Only either I or III and II follow 4) Only either I or III follows 5) None
158. Statements:
Some trees are jungles.
Some jungles are flowers.
All flowers are streets.
Conclusions:
I. Some streets are jungles.
II. Some streets are trees.
III. Some flowers are trees.
1) Only I follows 2) Only II follows 3) Only either I or III and II follow 4) Only I and II follow 5) None
159. Statements:
All desks are tables.
All tables are chairs.
Some chairs are sofas.
Conclusions:
I. Some sofas are desks.
II. Some chairs are desks.
III. Some tables are desks.
1) Only I and II follow 2) Only II and III follow 3) Only I and III follow 4) All follow 5) None
160. Statements:
Some cycles are bikes.
No bike is flower.
All flowers are goats.
Conclusions:
I. No goat is cycle.
II. Some flowers are cycles.
III. Some goats are bikes,
1) None follows 2) Only I follows 3) Only II follows 4) Only III follows 5) Only II and III follow
161. Statements:
All rivers are hills.
All hills are rocks.
Some rocks are sticks.
Conclusions:
I. Some sticks are hills.
II. Some sticks are rivers.
III. Some rocks are rivers.
1) None follows 2) Only I follows 3) Only II follows 4) Only III follows 5) Only II and III follow

162. Statements:
 All tyres are cars.
 All wheels are cars.
 All cars are trains.
 Conclusions:
 I. All tyres are trains.
 II. Some trains are wheels.
 III. Some trains are cars.
 1) Only I follows 2) Only I and II follow
 3) Only I and III follow 4) Only II and III follow 5) All follow y
- Directions (163-170):** Study the following information carefully and answer the given questions:
 A word and number arrangement machine when given an input line of words and numbers rearranges uiem following a particular rule in each step. The following is an illustration of input and rearrangement.
 Input : 51 pour 32 start now 23 46 house
 Step I : 23 51 pour 32 start now 46 house
 Step II : 23 start 51 pour 32 now 46 house
 Step in : 23 start 32 51 pour now 46 house
 Step IV : 23 start 32 pour 51 now 46 house
 Step V : 23 start 32 pour 46.51 now house
 StepVI : 23 start 32 pour 46 now 51 house
 And Step VI is the last step of the rearrangement. As per the rules followed in the above steps, find out in each of the following questions the appropriate step for the given input:
163. Step II of an input is: 18 task bear cold dish 81 63 31 How many more steps will be required to complete the rearrangement?
 1) Three 2) Four 3)Five 4)Six 5) None
164. Input:72 5937goforpicnic24journey_ How many steps will it take to complete the rearrangement?
 1) Three 2) Four 3) Five 4)Six 5) None
165. Input: nice flower 34 12 costly height41 56 Which of the following will be step III?
 1) 12hice34heightflowercostly41 56 2) 12 nice 34 height 41 flower costly 56
 3) 12nice34 flower costly height 41 56 4) 12niceflower 34 costly height41 56
 5) None
166. Step II of an input is: 16victory 193653 store lake town. Which of the following will be step V?
 ?
 1) 16 victory 19 town store 36 53 lake 2) 16 victory 19 town 36 store 53 lake
 3) 16 victory 19 town 36 53 store lake 4) There will be no such step.
 5) None
167. Step III of an input is: 15 yes 29 ask for soap 42 37 Which of the following is definitely the input?
 1) ask yes 29 15 for soap 42 37 2)yesask 1529forsoap4237
 3)29 15yesaskforsoap42 37 4) Cannot be determined 5) None
168. Input: milk pot 18 24 over goal 36 53
 Which of the following steps will be the last but one?
 1)VI 2)V 3)VH 4)VHI 5) None
169. Step III of an input is: 36 win 44 95 86 ultra box queen How many more steps will be required to complete the rearrangement?
 1) Three 2) Four 3) Five 4)Six 5) None
170. Input:new22model27pump38 Iljoin
 How many steps will be required to complete the rearrangement?
 1)Four 2) Five 3) Six 4) Seven 5) None
- Directions (171-175):** Study the following information carefully and answer the questions given below:
 R,Q, R, S, T, V and W are seven friends working in a call centre. Each of them has different day offs in a week from Monday to Sunday not necessarily in the same order. They work in three different shifts I, II and III with at least two of them in each shift.
 R works in shift II and his day off is not Sunday. P's day off is Tuesday and he does not work in the-same shift with either Q or W. None of those who work in shift I has day off either on Wednesday or on Friday, V works with only T in shift III. S's day off is Sunday. V's day off is immediate next day of that of R's day off. t's day off is not on Wednesday. W's day off is not on the previous day of P's day off. S works in shift I. Q does not work in the same shift with Rand his day off is not on Thursday.
171. Which of the following is W's day off?
 1) Tuesday 2) Monday 3) Saturday 4) Data inadequate 5) None
172. Which of the following is R's day off?
 1) Friday 2) Thursday 3) Tuesday 4) Wednesday 5) None

173. Which of the following groups of friends work in shift II?
 1) RP 2) RV 3) QWS 4) Data inadequate 5) None
174. Which of the following is Q's day off?
 1) Friday 2) Wednesday 3) Thursday 4) Monday 5) None
175. Which of the following groups of friends work in shift I?
 1) RV 2) RP 3) QWS 4) Data inadequate 5) None

Directions (176-180): In each question below is given a statement followed by two assumptions numbered I and II. An assumption is something supposed or taken for granted. You have to consider the statement and the following assumptions and decide which of the assumptions is implicit in the statement

Give answer 1) If only Assumption I is implicit.

Give answer 2) If only Assumption II is implicit.

Give answer 3) If either I or II is implicit.

Give answer 4) If neither I nor II is, implicit.

Give answer 5) If both I and II are implicit.

176. Statement: A nationalised bank issued an advertisement in the national dailies asking the eligible candidates to apply for 100 posts of chartered accountants.

Assumptions:

I. The eligible chartered accountants may respond to the advertisement.

II. There may be adequate number of eligible chartered accountants who may want to join a nationalised bank.

177. Statement: The municipal authority announced before the onset of monsoon that the roads within the city will be free of potholes during monsoon.

Assumptions : I. The roads were repaired so well that potholes may not reappear.

II. People may not complain even if the potholes reappear.

178. Statement: "Our Europe Holiday Package costs less than some of the holiday packages within the country. An advertisement by an Indian travel company

Assumptions:

I. People may prefer to travel to foreign destinations than to the places within the coun-" try, at comparable cost.

II. People generally take their travel decisions after" getting information from such, advertisements.

179. Statement: The retail vegetable vendors increased the prices of vegetables by about 20 per cent due to non-availability of vegetables at lower prices at the wholesale market.

Assumptions:

I. The customers may totally stop buying vegetables at higher prices.

II. The customers may still buy vegetables from the retail vendors.

180. Statement: A large number of students and parents stood in the queue to collect forms for admission to various under-graduate courses in the college.

Assumptions :

I. The college authority may be able to admit all those who stood in the queue.

II. The college authority may have adequate number of Forms for all those standing in the queue.

Directions (181-186): Study the following arrangement carefully and answer the questions given below: M4ET%J9IB@U8©N#WF1 V7*2AH3Y5\$6K

181. Which of the following is the ninth to the right of the seventeenth from the right end of the above arrangement?

1) A 2) % 3) 1 4) Y 5) None

182. What should come in place of the question mark (?) in the following series based on the above arrangement ?

4 T % 9 B @ 8 N # F V 7 ?

1) 2H3 2) 2HY 3) *AH 4) *A3 5) None

183. Four of the following five are alike in a certain way based on their positions in the above arrangement and so form a group. Which is the one that does not belong to that group?

1) JI T 2) 35A 3) \$KY 4) A3* 5) 8@@

184. How many such vowels are there in the above arrangement, each of which is immediately preceded by a number and, immediately followed by a consonant?
 1) None 2) One 3) Two 4) Three 5) Four
185. How many such numbers are there in the above arrangement, each of which is immediately followed by a symbol and immediately preceded by a consonant?
 1) None 2) One 3) Two 4) Three
 5) More than three
186. How many such symbols are there in the above arrangement, each of which is immediately preceded by a consonant but not immediately followed by a consonant?
 1) None 2) One 3) Two 4) Three 5) More than three

Directions (187-193): In the following questions, the symbols \$, @, ©, % and # are used with the following meaning as illustrated below:

'P \$ Q*' means 'P is not smaller than Q'

'P @ Q' means 'P is not greater than Q'.

'P © Q' means 'P is neither greater than nor equal to Q'

'P % Q' means 'P is neither smaller than nor equal to Q'

'P # Q' means 'P is neither greater than nor smaller than Q'

Now in each of the following questions assuming the given statements to be true find which of the conclusions II and III given below them is/are definitely true and give your answer accordingly.

187. Statements:
 M©T, T@J, J#D
 Conclusions: I. D#T II. D%T III. D%M
 1) All are true 2) Only I is true 3) Only II is true
 4) Only either I or II is true x 5) Only either I or II and III are true
188. Statements:
 H \$ J, J©M, M@T
 Conclusions: I. H%M II. H\$T III. T%J
 1) Only I is true 2) Only III is true 3) Only II is true
 4) Only I and II are true 5) None
189. Statements:
 R@N, N% E, E#K
 Conclusions: I. R©K II. K%N III. E%R
 1) None is true 2) Only I is true 3) Only II is true
 4) Only III is true 5) Only II and III are true.
190. Statements:
 M©K, K%T, T\$R
 Conclusions: I. R©K II. R©M III. T©M
 1) Only I is true 2) Only II is true 3) Only III is true
 4) Only I and II are true 5) None
191. Statements: D#W, W\$Z, 2%M
 Conclusions: I. Z @ D II. M © D III. D \$ M
 1) Only I and II are true 2) Only II and III are true
 3) Only I and III are true 4) All are true 5) None
192. Statements:
 K%N, N\$B, B©D
 Conclusions: I. D % N II. K%D III. B©K
 1) None is true 2) Only II is true 3) Only III is true
 4) Only I is true 5) Only II and III are true
193. Statements:
 T#A, A\$B, B@D
 Conclusions: I. D#A II. D#T III. B@T
 1) None is true 2) Only I is true
 3) Only II is true 4) Only III is true 5) Only I and III are true

Directions (194-200): Study the following information carefully and answer the questions given below:

Following are the conditions for selecting Manager-Finance in an organisation :

The candidate must

- (i) be a graduate in any discipline with at least 50 per cent marks,
- (ii) be a postgraduate in Management with specialisation in Finance.
- (iii) be at least 25 years and not more than 35 years as on 1.2.2008.
- (iv) have post-qualification work experience of at least two years in the Accounts/Finance department of an organisation.
- (v) have secured at least 40 per cent marks in the selection process.

In the case of a candidate who satisfies all the criteria **EXCEPT—**

(A) at (ii) above, but has worked as Deputy Manager -Finance in an organisation for at least three years, his/ her case is to be referred to General Manager-Finance.

(B) at (v) above, but has secured at least 70 per cent marks in postgraduation, his/her case is to be referred to President-Finance.

In each question below, detailed information of one candidate is provided. You have to take one of the following courses of action based on the information provided and the conditions and sub-conditions given above and mark your answer accordingly. You are not to assume anything other than the information provided in case of each candidate. All these cases are given to you as on 1.2.2008.

Mark answer 1) If the candidate is not to be selected.

Mark answer 2) If the data provided are not adequate to take a decision.

Mark answer 3) If the case is to be referred to General Manager-Finance.

Mark answer 4) If the case is to be referred to President-Finance.

Mark answer 5) If the candidate is to be selected.

- 194. Neeta Kothari was born on 10th September, 1975. She has been working in the Finance Deptt of an organisation for the past four years after completing her MBA with Finance specialisation. She has secured 60 – 68. per cent marks in the selection process.
- 195. Gopal Sharma has secured 60 per cent marks in graduation. He has been working in the Finance Deptt of an organisation for the past four years after completing his. MBA in Finance with 75 per cent marks. He was born on 25th May, 1978. He has secured 39 per cent marks in the 69. selection process.
- 196. Sikha Dwivedi was born on 8th March, 1975. She has secured 60 per cent marks in both graduation and post graduation. She has been working in the Accounts Deptt of an organisation for the past three years after completing her postgraduation. She has secured 65 per cent 70. marks in the selection process.
- 197. Samir Malhotra has secured 55 per cent marks in graduation and 65 per cent marks in MBA-Finance. He has been working as Deputy Manager-Finance in an organisation for the past four years after completing his MBA. He was born on 24th February, 1980. He has secured 60 per cent marks in the selection process.
- 198. Somnath Banerjee was born on 8th July, 1972. He has secured 65 per cent marks in both graduation and MBA-Finance. He has also secured 70 per cent marks in the selection process. He has been working in the Accounts Deptt of an organisation for the past three years after completing his MBA.
- 199. Ashok Chandra has secured 70 per cent marks in graduation and 65 per cent marks in MBA-Finance. He has been working for the past three years in the Finance Deptt of an organisation after completing his MBA. He has secured 35 per cent marks in the selection process. He was born on 16th December, 1979.
- 200. Avinash Chopra has been working as Deputy Manager-Finance in an organisation for the past four years after completing graduation with 65 per cent marks. He has also done a diploma in Finance Management. He has secured 55 per cent marks in the selection process. He was born on 3rd April, 1978.

V

KEY

1.3 2.5 3.4 4.1 5.3 6.2 7.2 8.1 9.4 10.1 11.5 12.4 13.2 14.3 15.1
16.1 17.4 18.3 19.2 20.5 21.5 22.3 23.2 24.1 25.4 26.3 27.1 28.5 29.4 30.2
31.1 32.5 33.4 34.3 35.2 36.5 37.4 38.2 39.3 40.4 41.5 42.2 43.3 44.4 45.1
46.2 47.4 48.2 49.5 50.2 51.3 52.1 53.2 54.1 55.4 56.4 57.2 58.2 59.4 60.3
61.2 62.4 63.1 64.4 65.2 66.3 67.3 68.3 69.2 70.2 71.2 72.3 73.3 74.2 75.1
76.1 77.3 78.1 79.4 80.4 81.1 82.2 83.1 84.1 85.4 86.3 87.4 88.1 89.1 90.5
91.2 92.2 93.3 94.3 95.1 96.1 97.4 98.1 99.3 100.4 101.3 102.3 103.4 104.4 105.3
106.3 107.5 108.4 109.3 110.1 111.3 112.2 113.2 114.4 115.5 116.2 117.1 118.4 119.5 120.4
121.4 122.1 123.5 124.4 125.4 126.3 127.3 128.1 129.2 130.5 131.2 132.1 133.5 134.5 135.5
136.2 137.4 138.3 139.5 140.1 141.5 142.3 143.1 144.4 145.2 146.2 147.5 148.1 149.3 150.2
151.2 152.4 153.3 154.1 155.4 156.1 157.1 158.2 159.1 160.2 161.5 162.3 163.3 164.3 165.5
166.1 167.4 168.5 169.3 170.2 171.5 172.2 173.5 174.4 175.5 176.1 177.5 178.4 179.1 180.5
181.3 182.4 183.1 184.2 185.1 186.3 187.1 188.5 189.3 190.2 191.1 192.3 193.3 194.2 195.5
196.5 197.1 198.1 199.4 200.2

www.eenadupratibha.com